



- Structural steel & Misc. metals
- Fuel tanks and systems
- Piping systems
- Industrial safety and accessibility
- Structural assessment & inspection



Engineering - Procurement – Fabrication -Construction Management

Content



- About Us
- Vision & Core Values
- Market Sectors
- Services
- Highlights of Projects
- Contact

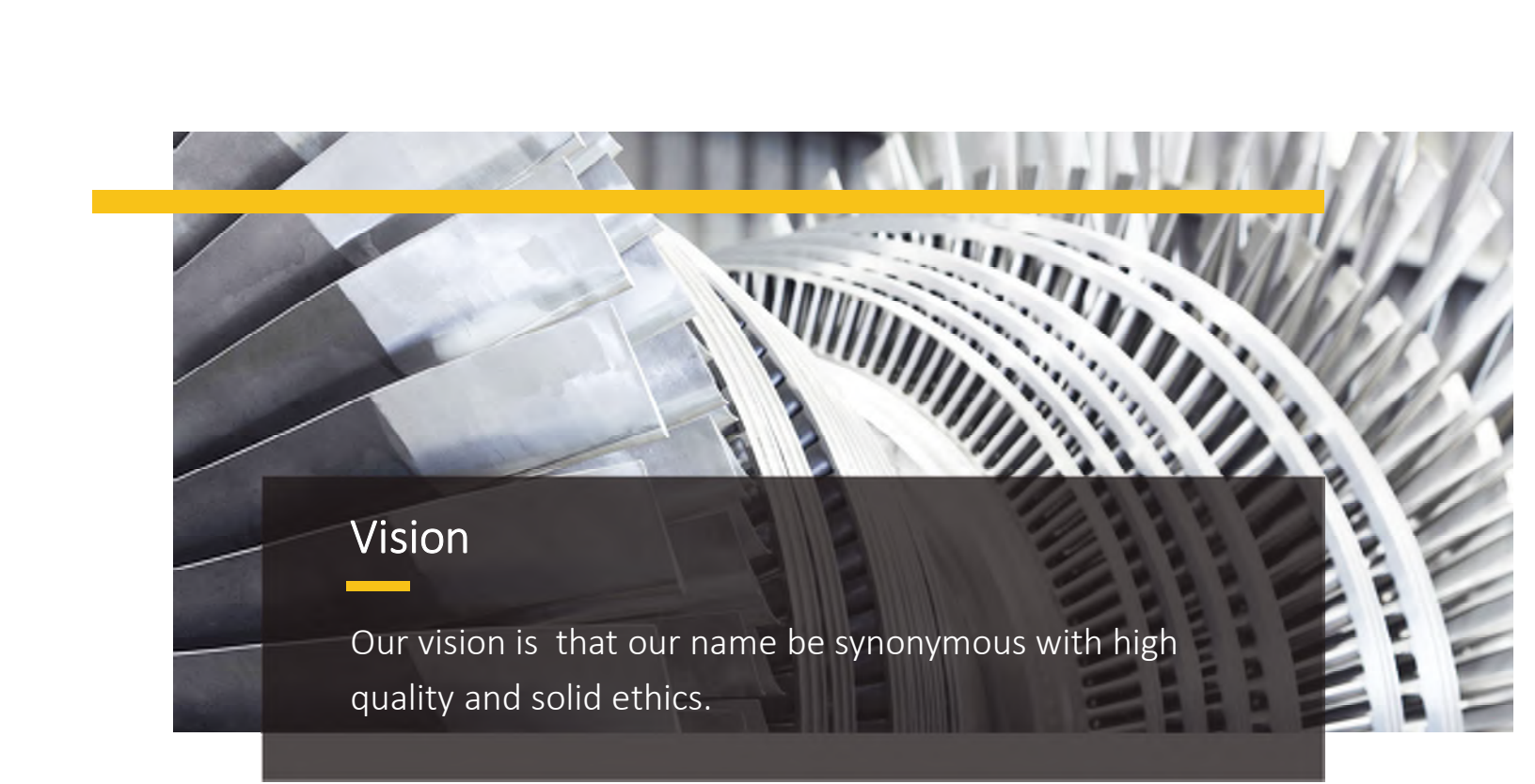


About Profound Engineering Inc.

Profound Engineering Inc. is an EPCM company with offices in Winnipeg, Mb and Edmonton, Ab. Founded in 2016, PE serves the industrial sector such as Wastewater and water treatment, mining, Oil & Gas, Power generation and Industrial facilities.

PE offers engineering, Procurement, fabrication and construction management. Over the past 6 years, PE successfully executed projects and provided products to clients in Canada, US and Australia whether as an EPC or as an engineering firm.

PE have engineering stamps in Alberta, Manitoba, Saskatchewan and British Columbia.



Vision

Our vision is that our name be synonymous with high quality and solid ethics.

Core Values



Integrity

To adhere to professional code of ethics and protecting the public interest.



Promise

To honor our promise to clients, employees, and shareholders.



Continuous Improvement

To be fully committed to continuous improvement in every business aspect.



Partnership

To Treat the interests of our clients as we would treat our own.



Market Sectors

Profound Engineering has a strong track record serving the following markets:

- Industrial Plants and Manufacturing Facilities.
- Water Treatment Plants.
- Mining.
- Power Generation.
- Oil & Gas.
- Transportation of Dangerous Goods.
- Commercial Facilities.






Services

Engineering, Procurement, Fabrication
and Construction Management.

- Project budgeting and risk assessment
- Procurement, fabrication & construction management
- Structural steel engineering and design
- Miscellaneous metals design
- Detailing and stamping Workshop drawings
- Structural assessment and failure analysis
- Storage Tank and piping systems design
- Lifting equipment design
- Fall protection systems design





Products

Industrial safety and accessibility

- Crossover stairs up to 8 ft clear height.
- Anti-slip roof Catwalk systems with or without handrails.
- Fall arrest anchors.
- Equipment aluminum and Steel Access platform systems.

** Refer to product catalogue for more information.*





Highlights of Projects (Structural)

South End Winnipeg Pollution Control Center Expansion (SEWPCC) Structural steel, Misc. metals, pipe supports, Platforms, hatches, etc.

- South End Wastewater Pollution Control Centre Expansion, Winnipeg Manitoba.
 - Workshop drawings for 1000 MT Pipe racks for Bio reactor buildings.
 - New Duct System structural supports.
 - Generator building structural framing.
 - Chemical building mezzanine platforms design.
 - Various structural and misc. projects around the new plant.
 - Evaluation of Sluice system conveyor integrity.
 - Assessment of various mechanical equipment installation procedures.
 - Multiple overhead crane installations.
 - Numerous equipment installation assessment and repairs.

Project kick off 2018 and commissioning in 2022.

Highlights of Projects (Structural)

SEWPCC Expansion project, Wpg Mb
Pipe Racks



Highlights of Projects (Structural)

SEWPCC Expansion project
Duct support systems



Highlights of Projects (Structural)

SEWPCC Expansion project
Equipment supports



Highlights of Projects (Structural)

SEWPCC Expansion project
Monorail cranes



Highlights of Projects (Tanks)

North American Palladium, Thunder Bay, On
Simplot, Portage la prairie, Mb

- Profound Engineering Designed the following Tanks.
 - North American Palladium Overflow Tank.
 - Simplot Ground Pit Tank SS Skin bonded with Concrete walls. And grated cover rated for heavy truck load.



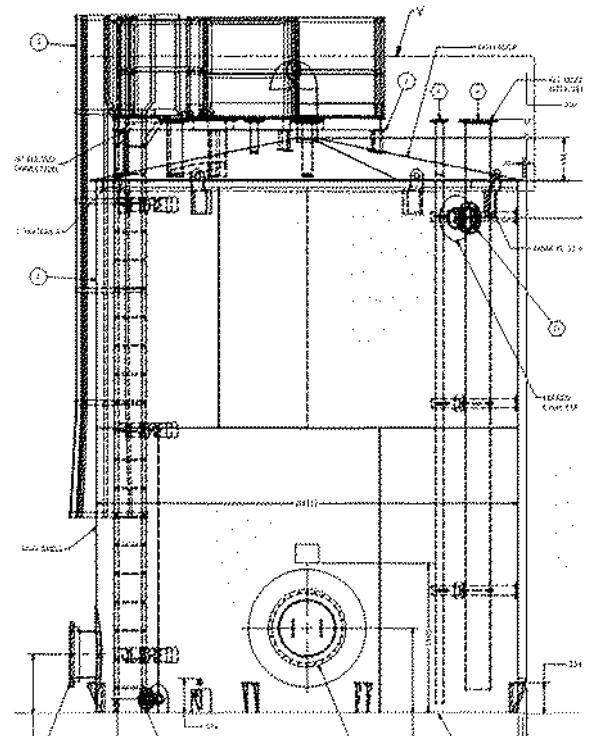
*Ground Sump pit tank
at Simplot*



Overflow box 20,000 L

Highlights of Projects (Tanks)

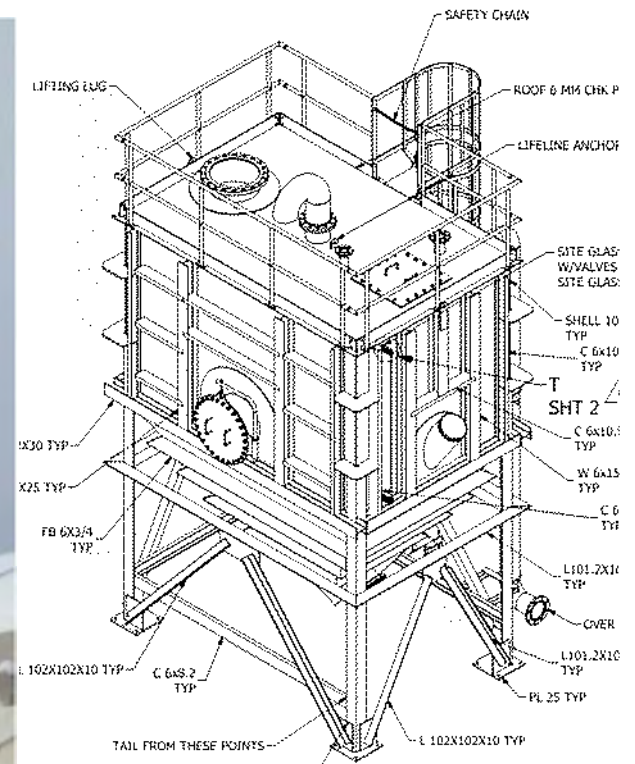
Orano Canada, Uranium City, Sk



API 650 TANK 100 m³

Highlights of Projects (Tanks)

Orano Canada, Uranium City, Sk



INTERIM TANK FOR SLURRY S.G 2.5

Highlights of Projects (Fuel systems)

Ouy Tolgoi Gold Mine, Mongolia Complete Mine Fuel system

- Complete Fuel system design to supply Gold mine at 2km below grade operation tanks (photos curtesy of Western Global Winnipeg), package includes:
 - 100 m3 Storage Tank.
 - Fully automated PLC system for truck load, unload, separation, filtration, metering and batching.
 - Drop Pipe down to on site tanks at 2km below grade.



Highlights of Projects (Fuel systems)

Ouy Tolgoi Gold Mine, Mongolia
Complete Mine Fuel system

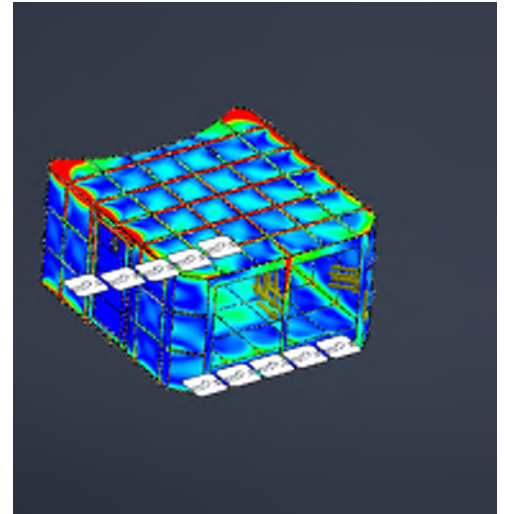


Highlights of Projects (Upgrade & reinforcement)

Roquette Pea protein facility
Explosion proof ducts



Structural assessment and reinforcement to upgrade existing explosion proof ducts to code.



Highlights of Projects (industrial safety)

Master Brand cabinets roof safety system, Wpg Mb

- Design, procurement, fabrication, roofing works and construction of custom fixed large span roof guard rails (20 ~25 ft span) to accommodate the Building existing structure. The rail is equipped with a special design bracket that allows the crew to install such heavy beams without the use of a crane due to constraints.



Highlights of Projects (industrial safety)

Master Brand cabinets roof safety system, Wpg Mb



Highlights of Projects (industrial safety)

Master Brand cabinets roof safety system, Wpg Mb

Walkways mounted to standing seam roofs.



Highlights of Projects (industrial accessibility)

Master Brand cabinets platforms
Wpg Mb

Conveyor access platform



Highlights of Projects (industrial accessibility)

Master Brand cabinets platforms
Wpg Mb

Conveyor access platform



Highlights of Projects (industrial accessibility)

Master Brand cabinets duct crossover stairs
Wpg Mb

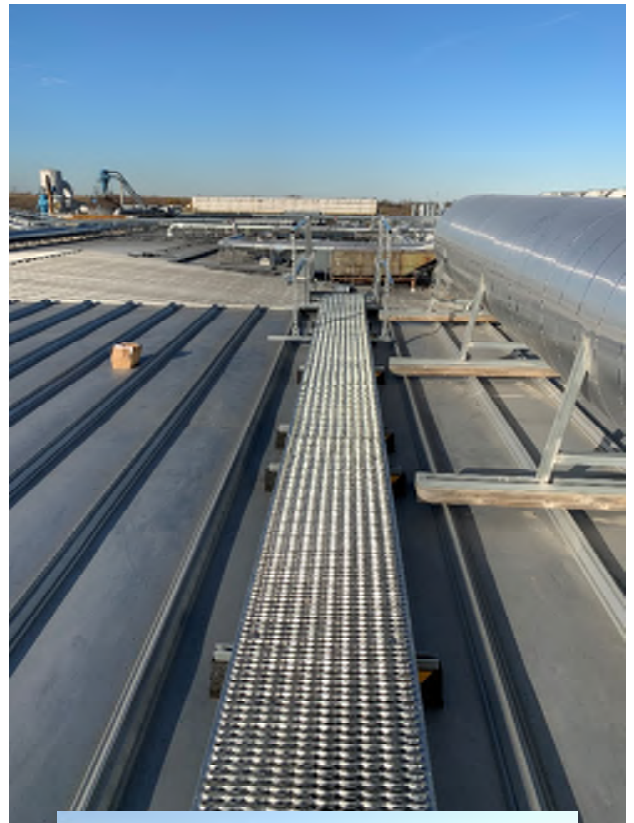


** Duct crossover stairs vary in heights starting from 3' clear height up to 8 feet clear height.*

Highlights of Projects (industrial accessibility)

Master Brand cabinets walkways & stairs
Wpg Mb

Stairs and walkways across buildings of different heights.



Highlights of Projects (industrial accessibility)

Master Brand cabinets access stairs
Wpg Mb

Platform access stairs



Highlights of Projects (Misc. Metals)

Simplot Roof Access Stairs, Portage la Prairie, Mb

- Design and Shop drawings for Roof Access stairs complete with Joist reinforcement for posts.



Contact

Email: info@profoundeng.com
www.profoundeng.com



Winnipeg office:

330 St Mary Ave. Winnipeg, MB
Canada R3C 3Z5
T: +1 204 698 0657

Edmonton office:

Suite 3400, 10180 101 Street NW
Edmonton, AB
T5J 3S4
T: +1 587 743 0842